

4. Piparkoogilaps

Sõnad I. Lember

Sille Tamm

Lõbusalt
D



1. Tu - li prak - sus, tu - li prak - sus priks - praks (pl)
2. Pan - nilt tat - sas, pan - nilt tat - sas tips - taps (j)



priks - praks, (pl) pak-suks pai - sus, pak-suks pai - sus
tips - taps, (j) kak - si - rat - sa, kak - si - rat - sa

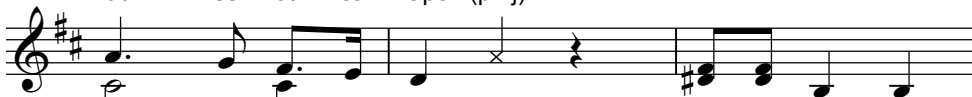


1. pi - par - koo - gi - laps. (pl) (pl)



koo - - gi - laps (pl) (pl)

2. kuu - se ot - sa kraps (pl+j)



ot - sa kraps (pl+j) Ku - hu läk - sid,

Em (saade)



ku - hu läk - sid pi - par - koo - gi - laps? (j) (j) (j)

*(pl) - käteplaks, (j) - jalalöök, (n) - sõrmenips
(võib kasutada ka rütmipille)

23. Kepphobune

Sõnad V. Sõelsepp

Sille Tamm

Rütmikalt, rõõmsa hooga

Musical score for the first system of 'Kepphobune'. It consists of two staves: a vocal line in treble clef and a piano accompaniment line in bass clef. The key signature has one flat (B-flat) and the time signature is 2/4. The melody is marked with chords F, C7, F, C7, F, and Bb. The lyrics are: Kap - pa - di - kapp, kap - pa - di - kapp, mi - nu ho - bu - ne tra - a - vib. The piano accompaniment consists of a rhythmic pattern of eighth notes with 'x' marks indicating where the piano should be struck.

F C⁷ F C⁷ F B^b

Kap - pa - di - kapp, kap - pa - di - kapp, mi - nu ho - bu - ne tra - a - vib

klok*-klok klok-klok klok jne.

Musical score for the second system of 'Kepphobune'. It consists of two staves: a vocal line in treble clef and a piano accompaniment line in bass clef. The key signature has one flat (B-flat) and the time signature is 2/4. The melody is marked with chords F, C7, F, and C7. The lyrics are: nii! Kap - pa - di - kapp, kap - pa - di - kapp ei. The piano accompaniment consists of a rhythmic pattern of eighth notes with 'x' marks indicating where the piano should be struck.

F C⁷ F C⁷

nii! Kap - pa - di - kapp, kap - pa - di - kapp ei

Musical score for the third system of 'Kepphobune'. It consists of two staves: a vocal line in treble clef and a piano accompaniment line in bass clef. The key signature has one flat (B-flat) and the time signature is 2/4. The melody is marked with chords F, C7, F, and D. The lyrics are: ho - bu mind kra - a - vi vii. Kap - pa - me toas ja. The piano accompaniment consists of a rhythmic pattern of eighth notes with 'x' marks indicating where the piano should be struck.

F C⁷ F D

ho - bu mind kra - a - vi vii. Kap - pa - me toas ja

* keelega (nagu hobuse kappamine)

13. Kevad ja kindad

Sõnad L. Andre

Sille Tamm

Jutustavalt

F



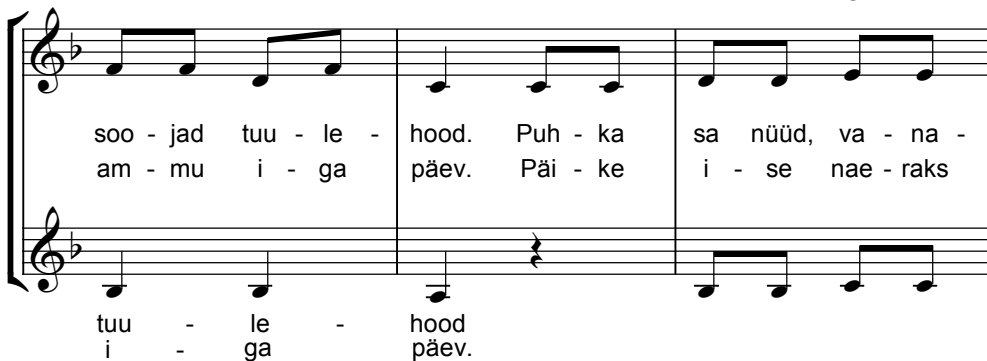
1. Tu - li me - ie ae - da ke - vad, kaa - sas
tead, kui soe on väl - jas, ju - ba

B^b

F

B^b

C



soo - jad tuu - le - hood. Puh - ka sa nüüd, va - na -
am - mu i - ga päev. Päi - ke i - se nae - raks

tuu - le - hood
i - ga - päev.

Dm

1.
C⁷



- e - ma, mis sa e - nam kin - nast kood! 2. Sa ju
väl - ja sel - le,

kin - nast kood!

10. Kevad oskab mitut tööd

Sõnad M. Kesamaa

Sille Tamm

Mõnusalt, tujurikkalt

G D A⁷ D

G D A⁷ D

D G A

Ke- vad, ke- vad lau- lu - mees hoi- ab tak - ti -

uu uu uu

D /C# Bm G

kep - pi ei ta nuk - rust ar- mas - ta,

uu uu uu

22. Maiasmokk

Sõnad K. Kangur

Sille Tamm

Tujurikkalt

F Am B^b

1. Kes on ka - pi kal - lal käi - nud, kes on nõn - da
2. Kes on ka - pi kal - lal käi - nud, leid - nud suhk - ru -

F B^b F

mai - as?
-too - si? Sai - ast ro - si - nad on läi - nud,
Moo - si - pur - gist moos on läi - nud,

G⁷ C⁷ F

au - gud on vaid sai - as. Kes on ka - pi
miks seal po - le moo - si? Kes on ka - pi

au - gud sai - as. Kes
po - le moo - si? Kes

C Gm C

kal - lal käi - nud, leid - nud suhk - ru - too - si?
kal - lal käi - nud, kes on nõn - da mai - as?

on leid - nud too - si?
on mai - as, mai - as?

19. Õunasadu

Sõnad E. Esop

Sille Tamm

Jutustavalt

Musical notation for the first system, featuring a treble and bass clef with a key signature of one sharp (F#) and a common time signature (C). The melody is written on the treble clef, and the bass line is on the bass clef. The lyrics are written below the treble clef. The system is divided into two measures by a double bar line. The first measure contains the lyrics '1. Suu - red õu - nad o - lid' and '2. "Ta - han" vin - gus vas - tu'. The second measure contains the lyrics 'puul. Tui - li' and 'tuul. Re - bis'. Above the first measure, the chord 'D' is indicated. Above the second measure, the chord 'A' is indicated. Above the third measure, the chord 'D' is indicated. The word 'uu' is written below the bass line at the end of the system.

1. Suu - red õu - nad o - lid puul. Tui - li
2. "Ta - han" vin - gus vas - tu tuul. Re - bis

uu

Musical notation for the second system, featuring a treble and bass clef with a key signature of one sharp (F#) and a common time signature (C). The melody is written on the treble clef, and the bass line is on the bass clef. The lyrics are written below the treble clef. The system is divided into three measures by double bar lines. The first measure contains the lyrics 'tu - hi - se - des, tu - hi - se des' and 'õu - nad õu - na -'. The second measure contains the lyrics 'tuul,' and 'puult.'. The third measure contains the lyrics 'uu'. Above the first measure, the chord 'G' is indicated. Above the second measure, the chord 'E7' is indicated. Above the third measure, the chord 'A' is indicated. Above the fourth measure, the chord 'A7' is indicated. The word 'uu' is written below the bass line at the end of the system.

tu - hi - se - des, tu - hi - se des tuul,
õu - nad õu - na - puult.

uu uu Õu - na - puud ta
Rõõm - salt Ma - ri

Musical notation for the third system, featuring a treble and bass clef with a key signature of one sharp (F#) and a common time signature (C). The melody is written on the treble clef, and the bass line is on the bass clef. The lyrics are written below the treble clef. The system is divided into three measures by double bar lines. The first measure contains the lyrics 'uu'. The second measure contains the lyrics 'ra - pu - tas.'. The third measure contains the lyrics 'tas.'. Above the first measure, the chord 'Bm' is indicated. Above the second measure, the chord 'E7' is indicated. Above the third measure, the chord 'A7' is indicated. The word 'uu' is written below the bass line at the end of the system.

uu ra - pu - tas. tas.

sa - pu - tas, tu - ge - vas - ti ra - pu - tas.
tup - pa ka - dus, hõis - kas:

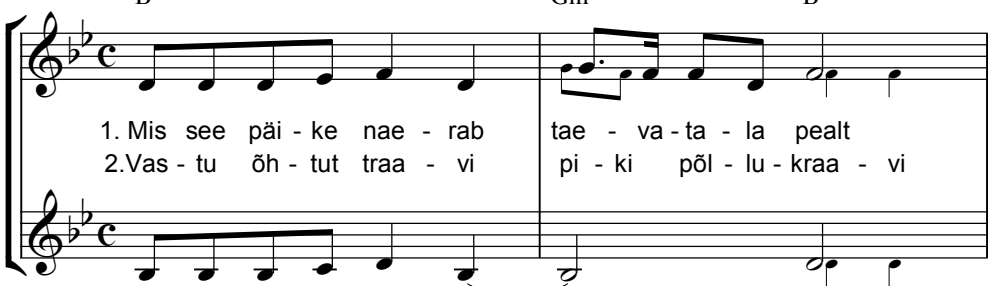
16. Lapse suvi

Sõnad E. Niit

Sille Tamm

Rõõmsa hooga


B^b Gm B^b



1. Mis see päi - ke nae - rab tae - va - ta - la pealt
2. Vas - tu õh - tut traa - vi pi - ki põl - lu - kraa - vi

1. Mis see päi - ke nae - rab _____ pealt
2. Vas - tu õh - tut traa - vi _____ kraa - vi


E^b F B^b



Eks ta kii - ri kae - la mei - le saa - dab sealt.____
muud - kui ko - du - mai - le, u - ne ud - ru - mai - le.

Eks ta kii - ri kae - la sealt.
muud - kui ko - du - mai - le, mai - - - le.

B^b G Cm



Kal - lab va - na su - li sel - get kul - la - pi - hu.
Päe - va ted - re - mu - na, e - ma põl - le tas - ku.

Kal - lab va - na su - li pi - - hu
Päe - va ted - re - mu - na, tas - - ku